

Ultra-Etch[®]



ULTRADENT
PRODUCTS, INC.

800.552.5512 ULTRADENT.COM

Tried, True & BLUE

- **Easy placement and rinsing**—distinctive **blue** color enhances placement and ensures complete removal.
- **Ideal viscosity**—thixotropic properties ensure precise placement without migrating, even on vertical surfaces.
- **Enhanced capillary action**—penetrates the smallest fissures on occlusal surfaces.
- **Peace of mind**—unique self-limiting chemistry prevents overetching, creating the optimal surface to receive resin.



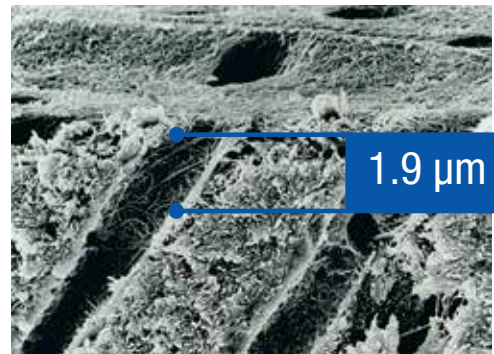
Clinical experience and FE-SEM evaluations⁴ show that 15 seconds etch time on both dentin and enamel provides optimal conditioning of both tissues. Air/water rinse. Blot excess water off, leaving surface visibly wet.



Listed as a “CAN’T LIVE WITHOUT” product by a prominent independent research institute for more than 20 years.¹



Listed as a “Tried and True” product.²



Ultra-Etch phosphoric acid is proven to be uniquely self-limiting in its depth of etch, with an average depth of 1.9µm using 15-second etch. Liquid phosphoric acid (37%) showed an average of 5.0µm at 20 seconds, and a competing “polymer thickened” etchant a 4.8µm depth.⁴ Acids with this greater depth of etch go beyond the optimum level and increase the potential for incomplete resin impregnation.

| | | | | | |
|-----|---|------|---|---|---|
| 163 | Ultra-Etch Kit <i>4 x 1.2 ml syringes 20 x Blue Micro tips</i> | 164 | Ultra-Etch Refill <i>4 x 1.2 ml syringes</i> | 685 | Ultra-Etch IndiSpense Syringe <i>1 x 30 ml IndiSpense syringe</i> |
| 167 | Ultra-Etch Econo Kit <i>20 x 1.2 ml syringes 40 x Blue Micro tips</i> | 168 | Ultra-Etch Econo Refill <i>20 x 1.2 ml syringes</i> |  | |
| 383 | Ultra-Etch IndiSpense Kit <i>1 x 30 ml IndiSpense syringe 20 x Blue Micro tips 20 x 1.2 ml empty syringes</i> | 1407 | Ultra-Etch Econo Refill <i>50 x 1.2 ml syringes</i> | | |

1. “Can’t Live Without” Clinical Research Associates Newsletter, Volume 21, Issue 7, July, 1997. 2. Jackie Syrop. Tried & True Ultra-Etch. Dental Product Shopper 2008 July/Aug; 2(6):76-77. 3. www.realityesthetics.com. 4. Perdigão J, Lambrechts P, Van Meerbeek B, and Vanherle G. A field emission SEM study of dentin etched with different phosphoric acid compositions and/or concentrations. Leuven, Belgium: Katholieke Universiteit te Leuven, 1994.

*Volume discounts available at three and five

800.552.5512 ULTRADENT.COM



© 2018 Ultradent Products, Inc. All rights reserved.
84040.10 111317

ULTRADENT
PRODUCTS, INC.

Improving Oral Health Globally